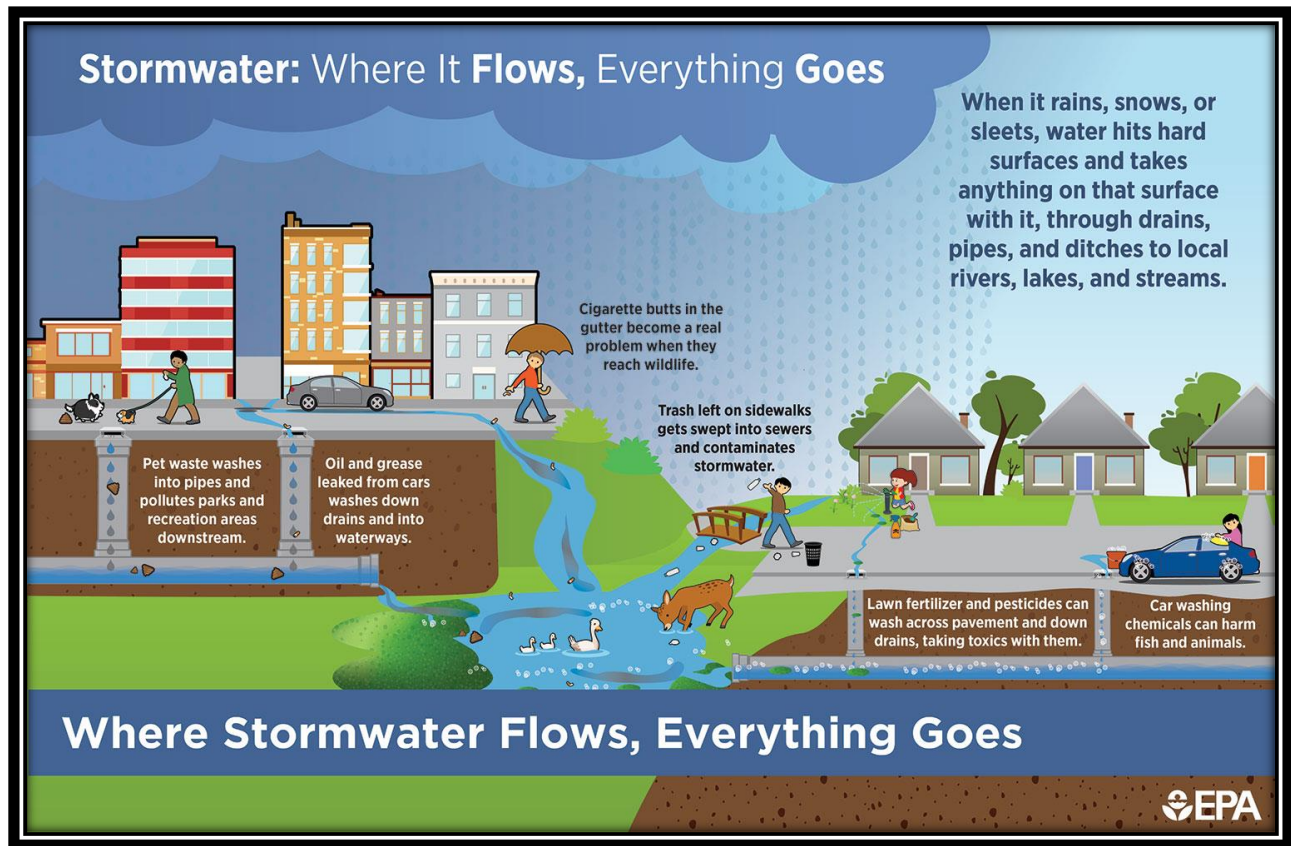


VILLAGE OF RIDGEFIELD PARK STORMWATER



Every resident, business, or guest to the community, should understand the importance of keeping our waterways clean. Here are some helpful things you can do everyday to protect our water.

LIMIT YOUR USE OF FERTILIZERS AND PESTICIDES

- *HAVE YOUR SOIL TESTED BEFORE FERTILIZING
- *DO NOT APPLY FERTILIZER IF HEAVY RAIN IS PERDICTED
- *LOOK INTO ALTERNATIVES FOR PESTICIDES
- *WHEN USING FERTILIZERS OR PESTICIDES CAREFULLY FOLLOW ALL LABEL INSTRUCTIONS
- *DISCARD UNUSED PORTIONS PROPERLY
- *PROPER STORAGE OF UNUSED FERTILIZER AND PESTICIDES SHOULD BE DONE
- *MAINTAIN A SMALL LAWN AND KEEP THE REST OF YOUR LAWN IN A NATURAL STATE

PROPERLY USE AND DISPOSE OF HAZARDOUS PRODUCTS

HAZARDOUS PRODUCTS INCLUDE THE FOLLOWING:

*HOUSEHOLD OR COMMERCIAL CLEANING PRODUCTS

* MOTOR OIL, ANTIFREEZE

* PAINTS

*CHECK LABELS FOR GUIDANCE ON PROPER DESPOIL

DO NOT POUR ANY HAZARDOUS PROUDUCTS DOWN STORM DRAINS

STORM DRAINS ARE CONNECTED TO LOCAL WATER BODIES

*IF DISPOSAL OF HAZARDOUS WASTE IS NEEDED GO TO THE BERGEN COUNTY UTILITES

WEBSITE WWW.BCUA.ORG

CLEAN UP AFTER YOUR DOG

*FOLLOW THE LOCAL LAWS

* PICKUP WASTE AND DISCARD IN THE YOUR GARBAGE

* NEVER DISCARD PET WASTE IN ANY STORM DRAINS

DON'T LITTER

*PUT LITTER IN YOUR TRASH CANS

*RECYCLE, RECYCLE, RECYCLE

DON'T FEED THE WILDLIFE

*DON'T FEED WILD FOWL

* FOLLOW TOWN ORD. # 123-2

DISPOSAL OF YARD WASTE

***DON'T BLOW YARD WASTE INTO STREET EXCEPT FOR LEAF SEASON**

*KEEP LEAVES & GRASS OFF STORM DRAINS

*USE LEAVES AND GRASS CLIPPINGS AS A RESOURCE FOR COMPOST

*USE A MULCHING MOWER

*FOLLOW RULES FOR YARD WASTE COLLECTION

BRING YOUR CAR TO A CAR WASH